

WOLFFKRAN



WOLFF 6523 Clear

Proven lifting capacity with
an innovative design

INNOVATIVE - EFFICIENT – SAFE

The WOLFF 6523 Clear

Fast operating speeds guaranteed

The WOLFF 6523 Clear is equipped with the powerful 45 kW Hw 845 FU hoist winch of its predecessor, providing fast operating speeds of up to 115 m/min.

Available with two different tower connections

By default, the new WOLFF 6523 Clear is delivered with a combined UV 20/TV 20 tower connection, allowing it to be mounted freestanding on a 2.0 x 2.0 meter tower of up to 69 meters. Using a stronger 2.9 x 2.9 meter tower, it can free stand up to 106 meters without tie-ins, making this model ideal for use on large construction sites.

New generation WOLFF flat top crane in the 224 tm class

Strengthening WOLFFKRAN's portfolio: With the WOLFF 6523 Clear, WOLFFKRAN presents a new addition to the WOLFF Pack in the 224 mt class. The new flat top model is based on the popular classic WOLFF 6031 Clear, which is one of WOLFFKRAN's best-selling cranes with its compact flat top design, proven lifting capacities and its ease of assembly.

Best performance in two versions: The WOLFF 6523 Clear is available as an 8 and as a 12 tonnes version with a maximum jib length of 65 meters. The new WOLFF 6523 Clear lifts a maximum of 8.5 tonnes in 2-fall operation at 30 meters jib length and 12.0 tonnes in 4-fall at 21.5 meters jib length. Its tip load lifting capacity is 2.3 tonnes with a maximum jib length of 65 meters in 2-fall operation and 2.5 tonnes with the WOLFF Boost function activated – resulting in industry leading performance in its class. The jib can be extended from 30 to 65 meters in 2.5-meter increments.

Innovative design: The WOLFF 6523 Clear shines with a patented new design of the jib as well as the technical equipment for the installation of the WOLFF High-Speed-Positioning-System (HiSPS). Powerful hoist winch and numerous design details of the latest generation WOLFF Clear models complete its profile and guarantee maximum efficiency and safety.





Efficient and simple design

The tower top section presents itself orderly, as usual for WOLFF clear cranes, offering easy access to all crane components and the cabin platform with the switch cabinet without any obstructive parts or tripping hazards getting in the way.

Featuring a tried-and-tested design, the cabin and switch cabinet are located on the driver's cab station, which is connected to the rotating frame, making assembly easy.



Simply compact

The cabin platform with the WOLFF CAB cabin, switch cabinet and resistor banks come preassembled as one unit from the production line and can be transported and lifted on to the crane in one piece. Only two bolts are necessary to connect it to the crane. As soon as attached, the slewing part can be rotated to facilitate further assembly.



Equipped for HiSPS

The WOLFF 6523 Clear is the first WOLFF in the pack with the technological prerequisites to activate the new High-Speed-Positioning-System (HiSPS). It is an option that can be acquired when purchasing the crane. The sensors attached to the trolley and the hook block allow the load to be transported nearly free of load sway and to be positioned with millimeter accuracy. The patent-pending technology significantly increases work safety and efficiency on the construction site.

Thanks to the smooth jib transitions, the trolley equipped with lateral guide rollers runs more quietly along the jib.



New jib design for optimized assembly

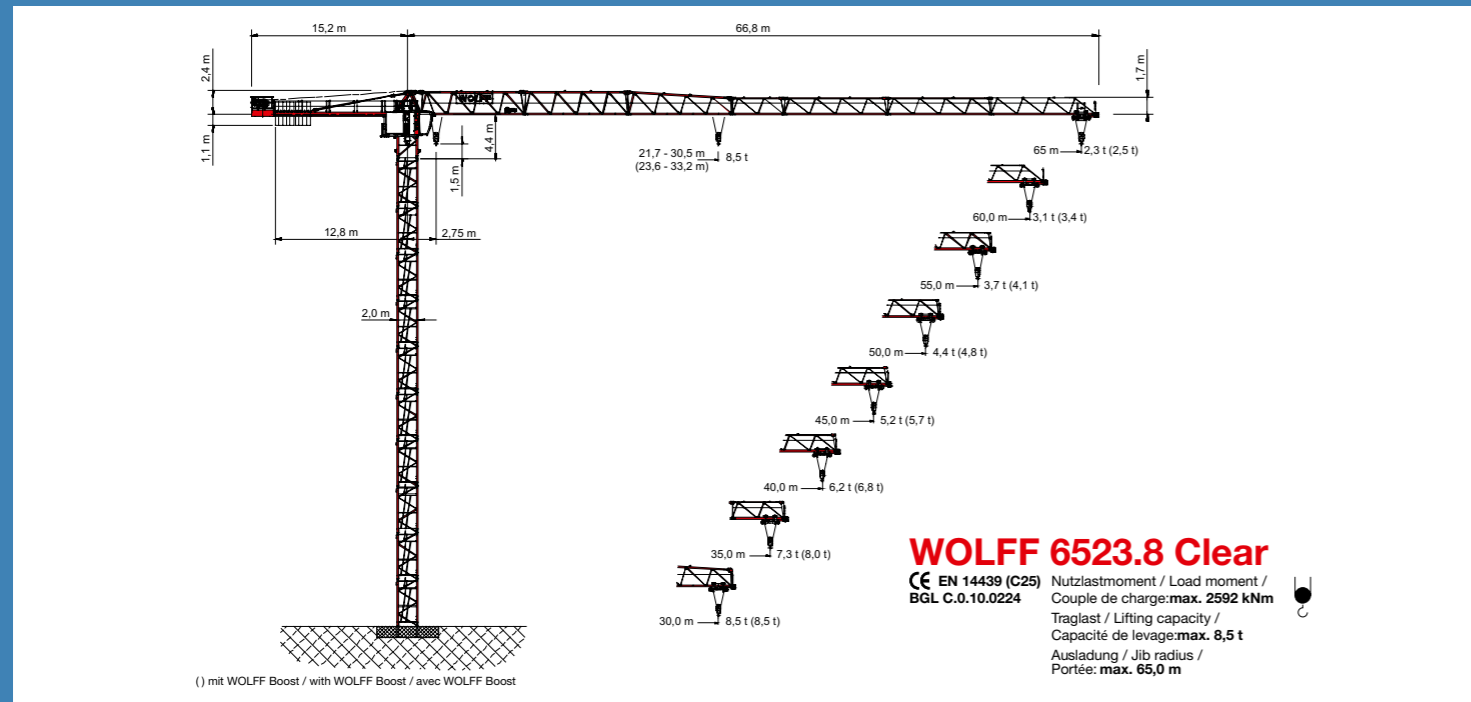
The bottom chord connection of the jib sections has been redeveloped with a patented design. Instead of using bolts, the jib sections, including the rope swivel traverse, are mounted at the front with a spindle and wedge connection.



WOLFF 6523.8 Clear

Technical information

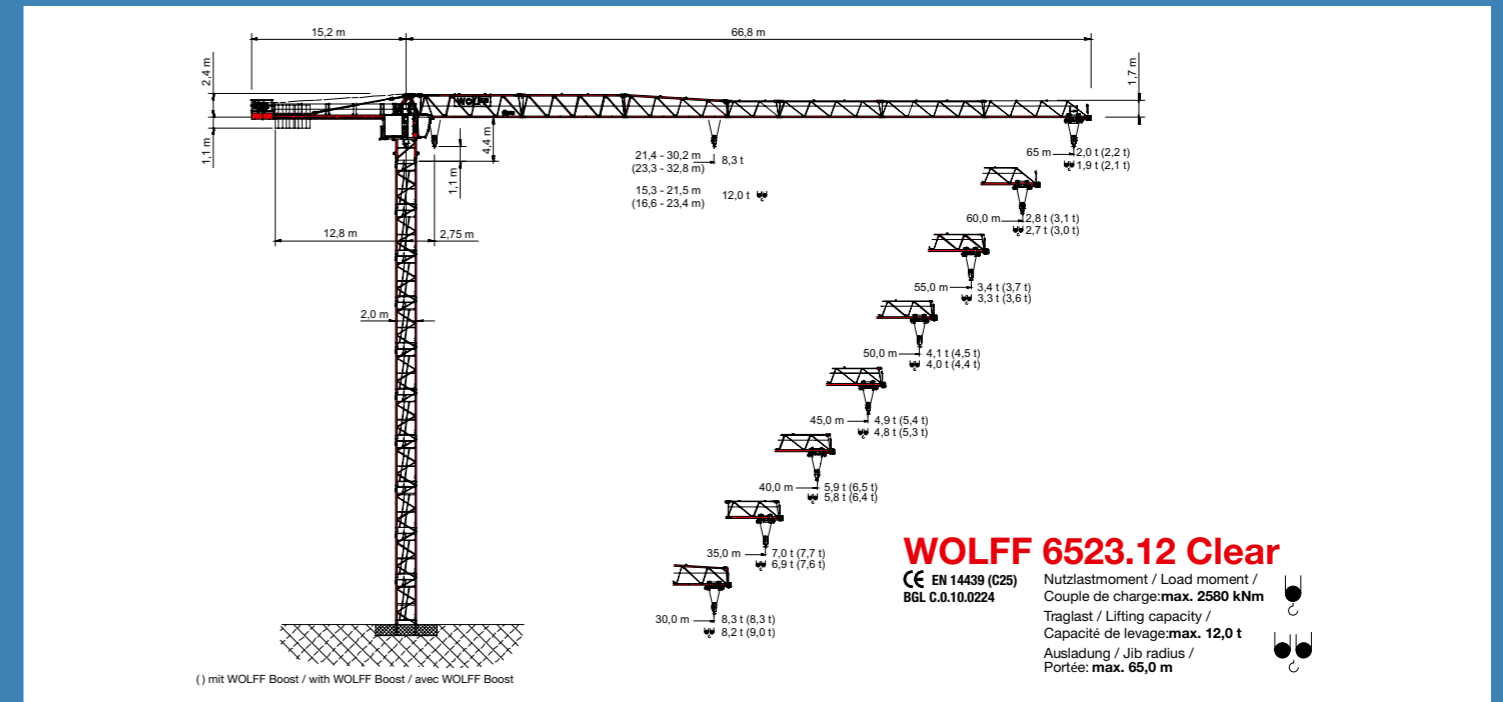
Plan Drawing • WOLFF 6523.8 Clear



WOLFF 6523.12 Clear

Technical information

Plan Drawing • WOLFF 6523.12 Clear



Load Chart (t) • WOLFF 6523.8 Clear

Traglasten (t) - WOLFF 6523.8 Clear - Boost Load Data Charges																	
Ausladung / Jib radius / Portée (m)		25,0	30,0	32,5	35,0	37,5	40,0	42,5	45,0	47,5	50,0	52,5	55,0	57,5	60,0	62,5	65,0
Auslegerlänge / Jib length / Longueur de flèche (m)	65,0 2,75 - 23,6	8,0	6,5	5,9	5,5	5,0	4,7	4,3	4,1	3,8	3,6	3,3	3,2	3,0	2,8	2,7	2,5
	62,5 2,75 - 25,7	8,5	7,1	6,5	6,0	5,5	5,1	4,8	4,5	4,2	3,9	3,7	3,5	3,3	3,1	3,0	
	60,0 2,75 - 27,4	8,5	7,7	7,0	6,5	6,0	5,6	5,2	4,8	4,5	4,3	4,0	3,8	3,6	3,4		
	57,5 2,75 - 28,3	8,5	8,0	7,3	6,7	6,2	5,8	5,4	5,0	4,7	4,4	4,2	4,0	3,7			
	55,0 2,75 - 29,0	8,5	8,2	7,5	6,9	6,4	5,9	5,5	5,2	4,9	4,6	4,3	4,1				
	52,5 2,75 - 29,6	8,5	8,4	7,7	7,0	6,5	6,1	5,6	5,3	5,0	4,7	4,4					
	50,0 2,75 - 30,5	8,5	8,5	7,9	7,3	6,7	6,3	5,9	5,5	5,1	4,8						
	47,5 2,75 - 31,2	8,5	8,5	8,1	7,5	6,9	6,4	6,0	5,6	5,3							
	45,0 2,75 - 31,7	8,5	8,5	8,3	7,6	7,0	6,6	6,1	5,7								
	42,5 2,75 - 32,4	8,5	8,5	8,5	7,8	7,2	6,7	6,3									
40,0 2,75 - 32,8	8,5	8,5	8,5	7,9	7,3	6,8											
37,5 2,75 - 33,0	8,5	8,5	8,5	8,0	7,4												
35,0 2,75 - 33,2	8,5	8,5	8,5	8,0													
32,5 2,75 - 32,5	8,5	8,5	8,5														
30,0 2,75 - 30,0	8,5	8,5															

Drives • WOLFF 6523.8 Clear

**Antriebe • WOLFF 6523.8 Clear • (Hw 845 FU)
Mechanisms
Mécanismes**

- Motor: 45 kW
Speed: 0 - 1,2 t / 0 ... 115 m/min stepless
0 - 8,5 t / 0 ... 26,0 m/min
Hook path: 190 m
- Motor: 7,5 kW
Speed: 0 - 3,0 t / 0 ... 100 m/min stepless
0 - 8,5 t / 0 ... 65,0 m/min
- Motor: 2 x 6,0 kW
Speed: 0,8 min⁻¹
- Motor: 2 x 5,5 kW
Speed: 25 m/min

Load Chart (t) • WOLFF 6523.12 Clear

Traglasten (t) - WOLFF 6523.12 Clear - Boost Load Data Charges																	
Ausladung / Jib radius / Portée (m)		25,0	30,0	32,5	35,0	37,5	40,0	42,5	45,0	47,5	50,0	52,5	55,0	57,5	60,0	62,5	65,0
Auslegerlänge / Jib length / Longueur de flèche (m)	65,0 2,75 - 27,1	7,7	6,2	5,6	5,1	4,7	4,3	4,0	3,7	3,5	3,2	3,0	2,8	2,6	2,5	2,3	2,2
	62,5 2,75 - 27,9	8,3	6,8	6,2	5,7	5,2	4,8	4,5	4,1	3,9	3,6	3,4	3,2	3,0	2,8	2,6	
	60,0 2,75 - 28,6	8,3	7,4	6,7	6,2	5,7	5,2	4,9	4,5	4,2	3,9	3,7	3,5	3,3	3,1		
	57,5 2,75 - 29,1	8,3	7,7	7,0	6,4	5,9	5,4	5,0	4,7	4,4	4,1	3,9	3,6	3,4			
	55,0 2,75 - 30,1	8,3	7,9	7,2	6,6	6,1	5,6	5,2	4,8	4,5	4,2	4,0	3,7				
	52,5 2,75 - 30,8	8,3	8,0	7,3	6,7	6,2	5,7	5,3	5,0	4,6	4,3	4,1					
	50,0 2,75 - 31,2	8,3	8,3	7,6	7,0	6,4	5,9	5,5	5,2	4,8	4,5						
	47,5 2,75 - 32,0	8,3	8,3	7,8	7,2	6,6	6,1	5,7	5,3	5,0							
	45,0 2,75 - 32,4	8,3	8,3	7,9	7,3	6,7	6,2	5,8	5,4								
	42,5 2,75 - 32,5	8,3	8,3	8,1	7,5	6,9	6,4	5,9									
40,0 2,75 - 32,8	8,3	8,3	8,3	7,6	7,0	6,5											
37,5 2,75 - 32,5	8,3	8,3	8,3	7,6	7,0												
35,0 2,75 - 30,0	8,3	8,3	8,3	7,7													
32,5 2,75 - 30,1	8,3	8,3	8,3														
30,0 2,75 - 30,0	8,3	8,3															
Auslegerlänge / Jib length / Longueur de flèche (m)	65,0 2,75 - 16,6	7,6	6,1	5,5	5,0	4,6	4,2	3,9	3,6	3,3	3,1	2,9	2,7	2,5	2,4	2,2	2,1
	62,5 2,75 - 18,1	8,3	6,7	6,1	5,6	5,1	4,7	4,4	4,0	3,8	3,5	3,3	3,1	2,9	2,7	2,5	
	60,0 2,75 - 19,3	9,0	7,3	6,6	6,0	5,5	5,1	4,7	4,4	4,1	3,8	3,6	3,4	3,2	3,0		
	57,5 2,75 - 19,9	9,3	7,5	6,9	6,3	5,8	5,3	4,9	4,6	4,3	4,0	3,7	3,5	3,3			
	55,0 2,75 - 20,4	9,6	7,8	7,1	6,5	5,9	5,5	5,1	4,7	4,4	4,1	3,9	3,6				
	52,5 2,75 - 20,8	9,8	7,9	7,2	6,6	6,1	5,6	5,2	4,8	4,5	4,2	4,0					
	50,0 2,75 - 21,5	10,1	8,2	7,5	6,9	6,3	5,8	5,4	5,0	4,7	4,4						
	47,5 2,75 - 22,0	10,4	8,4	7,7	7,0	6,5	6,0	5,6	5,2	4,8							
	45,0 2,75 - 22,3	10,6	8,6	7,8	7,2	6,6	6,1	5,7	5,3								
	42,5 2,75 - 22,8	10,8	8,8	8,0	7,4	6,8	6,3	5,8									
40,0 2,75 - 23,1	11,0	8,9	8,2	7,5	6,9	6,4											
37,5 2,75 - 23,2	11,1	9,0	8,2	7,5	6,9												
35,0 2,75 - 23,4	11,2	9,1	8,3	7,6													
32,5 2,75 - 23,4	11,1	9,1	8,3														
30,0 2,75 - 23,3	11,1	9,0															

Drives • WOLFF 6523.12 Clear

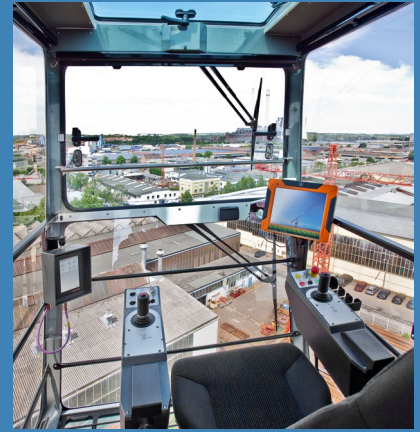
**Antriebe • WOLFF 6523.12 Clear • (Hw 845 FU)
Mechanisms
Mécanismes**

- Motor: 45 kW
Speed: 0 - 1,3 t / 0 ... 115 m/min stepless
0 - 8,3 t / 0 ... 26,0 m/min
Hook path: 190
- Motor: 45 kW
Speed: 0 - 3,5 t / 0 ... 58 m/min stepless
0 - 12,0 t / 0 ... 18,0 m/min
Hook path: 95 m
- Motor: 7,5 kW
Speed: 0 - 3,0 t / 0 ... 100 m/min stepless
0 - 8,3 t / 0 ... 65,0 m/min
0 12,0 t / 0 ... 40 m/min
- Motor: 2 x 6,0 kW
Speed: 0,8 min⁻¹
- Motor: 2 x 5,5 kW
Speed: 25 m/min

The WOLFF Standard

Best all-round visibility from the WOLFF CAB

The WOLFF CAB crane cabin offers optimum visibility and overview. The adjustable seat and ergonomically designed control panels allow for fatigue-free working. Tinted windows, quality blinds, an effective heating system and air conditioning ensure a comfortable working environment, regardless of season or climate zone. Further amenities such as a radio with SD/USB ports and Bluetooth, a drinks cooler, plenty of sockets and ample storage space are also included as standard. An easy-to-read 7-inch touchscreen color monitor optimally supports the crane operator.



Economical transportation on land and water

All components of the WOLFF clear cranes are designed to fit on regular trucks. The WOLFF 6523 Clear can be transported on four trucks. All crane components can be safely and quickly loaded and unloaded. If a WOLFF clear crane needs to travel overseas, no problem, all standard crane and tower components are container compatible.



Everything under (WOLFF crane) control

WOLFF cranes are fitted with the latest crane controls to ensure highest levels of safety. They adjust the performance of all drives to the requirements of the job site and support the crane operator with many security features, such as overload protection, working range limitation and an anti-collision interface. Also integrated as standard is the WOLFF Boost function increasing load capacity by 10%, as well as the remote data transmission system WOLFF Link facilitating maintenance and repairs.



Best service for best performance

WOLFF cranes are fitted with platforms, railings and further elements designed to increase safety around all major crane components and parts. Further, all WOLFF cranes feature an electrical central lubrication of the slew ring, a slip ring mechanism for optimal signal transmission and a temperature-controlled switch cabinet with heating and ventilation ensuring efficient and uninterrupted operating time of the crane. Together with the remote maintenance options offered by WOLFF Link and the experienced quick-response WOLFF Service-Teams nearby, you can rest assured that the WOLFF cranes on your site will perform day in, day out.



WOLFFKRAN International AG
Hinterbergstrasse 17
CH-6330 Cham
Switzerland
Phone: +41 41 766 85 75
info@wolffkran.com

Der Leitwolf
The leader of the pack.

www.wolffkran.com

