

PRESS RELEASE

A WOLFF crane in the botanical garden – Restructuring the European Patent Office in Vienna using Austria’s most powerful crane

Vienna – September 2023. **Austria’s most powerful construction crane is currently at the center of Vienna – not far from the Belvedere Palace. The WOLFF 8060.25 Cross is restructuring the European Patent Office building on Rennweg on behalf of construction company PORR. Planned by the firm ATP architekten ingenieure, this restructuring operation will be carried out according to the latest environmental standards, and assembling and operating the red giant will even play a significant role in protecting the surrounding flora and fauna.**

The only possible location for the crane in Vienna’s densely populated and high-traffic Landstraße district was the botanical garden at the University of Natural Resources and Life Sciences in Vienna between old and listed trees. The architects and construction site team worked closely with Vienna’s Wolffkran team and managed to find an environmentally friendly assembly concept and a suitable location for the crane. Only a small tree and a hedge stood in the way of the WOLFF crane, but they were successfully replanted elsewhere.

A sophisticated assembly requires precise planning

Since a mobile crane is unable to drive into the botanical garden, the WOLFF 8060.25 Cross was assembled from a distance of approx. 50 meters from the surrounding Prätoriusgasse using a 450 t mobile crane with top. “To make this complex operation a success, it not only took the expertise of our experienced assembly team but also close coordination and planning with the transport company since hardly any storage space is available on-site for the crane components,” says Zeljko Tenjovic, Managing Director of Wolffkran Austria GmbH.

The crane was assembled at the beginning of January. Prätoriusgasse – one of the main roads in the construction site area – had to be closed for the assembly, which is why the work had to be done within the narrow time frame of the school holidays, when traffic is low. Despite poor weather and shorter daylight hours, the crane was set up in just four days. The dismantling will likewise occur in the same fashion during the holidays next January.

WOLFFKRAN International AG
Božena Hloušek
Marketing und Event Manager
Group Marketing
Baarerstattstr. 6
CH-6340 Baar
T + 41 41 766 85 75
M + 41 78 918 94 94
b.hloušek@wolffkran.com
www.wolffkran.com

WOLFFKRAN GmbH
Dr.-Ing. Mohamed Abouelezz
Head of Business Development
Rentalstraße 20
D-74360 Ilsfeld
T +49 7062 999 95 25
M +49 171 2210 621
m.abouelezz@wolffkran.de
www.wolffkran.com

Press Contact
Sarah Spitzl-Kirch
Rumfordstr. 5
D-80469 München
M + 49. 173 47 40 908
spitzl-kirch@headline-affairs.de
www.headline-affairs.de

PRESS RELEASE

A high lifting capacity makes soil-friendly transport possible without construction vehicles

To overcome the distance between its location and the patent office building, the WOLFF 8060.25 Cross was set up with a maximum jib length of 80 meters. Despite its long jib, it still lifts a considerable 7.0 tons. "Its performance is unique in this crane class, making the WOLFF 8060.25 Cross currently the most powerful construction crane in Austria," says Zeljko Tenjovic.

The WOLFF 8060.25 Cross is able to fully take advantage of its high point-bearing capacity to reconstruct the European Patent Office. Since the objective is to use the construction road through the botanical garden as little as possible for environmental protection reasons, the crane transports both tipper bodies with rubble and any construction materials, construction equipment, and heavy prefabricated parts – such as entire staircases – back and forth between Prätoriusgasse and the construction site.

The European Patent Office's 50-year-old building will be fully gutted and restructured in a climate positive manner with heat recovery systems, a photovoltaic system on the roof, and the use of many sustainable wooden elements. As a result, it is expected to produce more energy than it consumes when it is commissioned at the end of 2024.

Crane specifications on this construction site:

WOLFF	Crane base	Jib radius, m	Hook height, m	max. lifting capacity/tip load capacity, t
8060.25 Cross	Foundation anchor	80.0	46.5	25.0 / 7.0

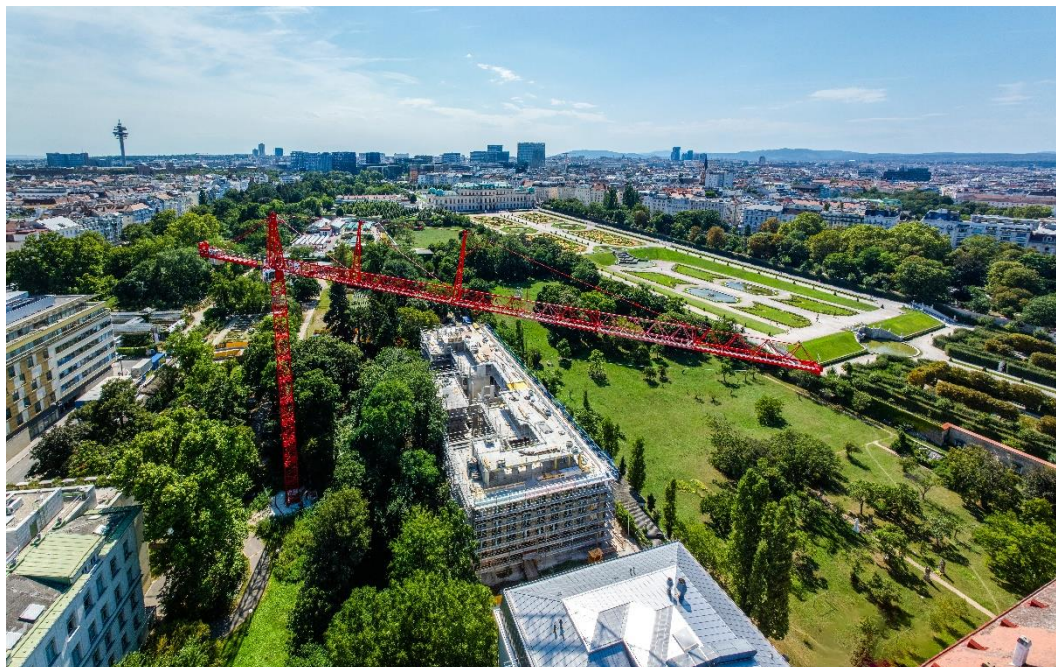
WOLFFKRAN International AG
Božena Hloušek
Marketing und Event Manager
Group Marketing
Baarerstattstr. 6
CH-6340 Baar
T + 41 41 766 85 75
M + 41 78 918 94 94
b.hloušek@wolffkran.com
www.wolffkran.com

WOLFFKRAN GmbH
Dr.-Ing. Mohamed Abouelezz
Head of Business Development
Rentalstraße 20
D-74360 Ilsfeld
T +49 7062 999 95 25
M +49 171 2210 621
m.abouelezz@wolffkran.de
www.wolffkran.com

Press Contact
Sarah Spitzl-Kirch
Rumfordstr. 5
D-80469 München
M + 49. 173 47 40 908
spitzl-kirch@headline-affairs.de
www.headline-affairs.de

WOLFFKRAN is a leading manufacturer of premium quality tower cranes with a tradition spanning over 150 years. With its own rental fleet of some 800 tower cranes it is also one of the largest crane rental businesses in the world. WOLFFKRAN is headquartered in Zug, Switzerland and has manufacturing sites in Heilbronn and Luckau, Germany. It currently employs a global workforce of approx. 860 people in its two manufacturing sites and its sales and service subsidiaries located across Western and Central Europe, the Middle East and the United States.

PRESS RELEASE – Pictures and Captions



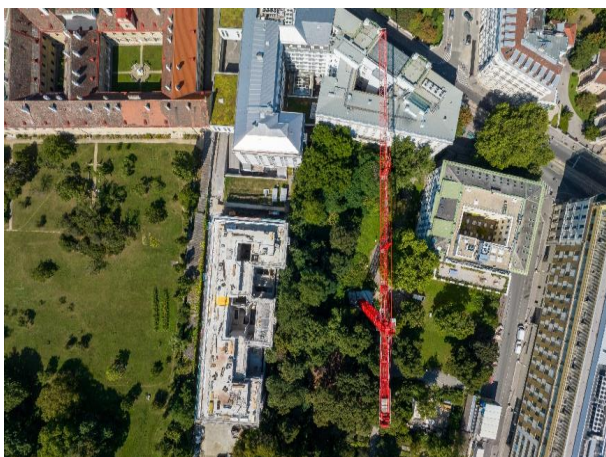
Working in the greenery with a view of the Belvedere Palace: Owing to good planning, the WOLFF 8060.25 Cross was positioned between the listed trees of the botanical garden of the University of Vienna.

WOLFFKRAN

PRESS RELEASE – Pictures and Captions



With a 7.0-ton tip load capacity and an 80-meter jib, the WOLFF 8060.25 Cross is currently Austria's most powerful construction crane.



This peak performance allows it to transport any construction materials and prefabricated parts between Prätoriusgasse (in the image on the right) and the construction site, virtually eliminating the need for construction vehicle traffic through the botanical garden, and it was also assembled from Prätoriusgasse.

WOLFFKRAN

PRESS RELEASE – Pictures and Captions



The WOLFF is expected to remain at the construction site until January 2024. Reconstruction efforts are expected to be completed in late summer 2024. As a climate-positive building, the Vienna location of the European Patent Office is expected to produce more regenerative power than it consumes as of the end of 2024.

